

John D. MacArthur Beach State Park Volunteer Information



Volunteers - Our Most Valuable Natural Resource



State of Florida
Rick Scott, Governor

Department of Environmental Protection



Florida Park Service
Donald V. Forgione, Director



John D. MacArthur Beach State Park

Donald Bergeron, Park Manager
David Dearth, Assistant Park Manager
Art Carton, Park Services Specialist
Lu Dodson, Park Services Specialist, Volunteer Coordinator
10900 Jack Nicklaus Drive, North Palm Beach, Florida 33408
www.macarthurbeach.org
www.floridastateparks.org
561-624-6950 Ranger Station
561-624-6952 Nature Center
561-624-6954 Facsimile
561-776-7449 xt 108 or 109 Park Services Specialists



Friends of MacArthur Beach State Park

Cheryl Houghtelin, Executive Director
Veronica Frehm, Director of Education
Peggy Stoll, Beach Outfitters Gift Shop Manager

John D. MacArthur Beach State Park Volunteer Handbook

Table of Contents

Section 1: Introduction

| | |
|------------------------------------|--------|
| 1.1 Mission Statements | page 4 |
| 1.2 Organizational Structure | page 5 |

Section 2: Park description and history

| | |
|---|--------|
| 2.1 Description of the Park | page 6 |
| 2.2 History | page 6 |
| 2.3 Florida Park Service Timeline | page 8 |

Section 3: MacArthur Beach Volunteer Program Overview

| | |
|---|---------|
| 3.1 Philosophy | page 9 |
| 3.2 Volunteer types | page 9 |
| 3.3 Steps to becoming a volunteer | page 10 |
| 3.4 Training and Evaluation | page 11 |
| 3.5 Uniform Standards | page 11 |
| 3.6 Scheduling & Attendance | page 13 |
| 3.7 Volunteer responsibilities | page 14 |
| 3.8 Risk Protection | page 14 |
| 3.9 Benefits | page 14 |

Section 4: Volunteer Opportunities

| | |
|---------------------------------|---------|
| 4.1 Position Descriptions | page 16 |
|---------------------------------|---------|

Section 5: Friends of MacArthur Beach State Park

| | |
|-----------------------------|---------|
| 5.1 Overview | page 19 |
| 5.2 Benefits | page 20 |
| 5.3 Membership levels | page 20 |

Section 1: Introduction

Thank you for your interest in volunteering at MacArthur Beach State Park!
Volunteers are our most valuable natural resource, and Volunteers become a part of our Park family. We offer a variety of opportunities to keep you both challenged and satisfied in your volunteer position.

Please do not hesitate to speak to your Volunteer Coordinator, and share your joys and concerns about volunteering with us.

1.1 Mission Statements

Florida Park Service Mission Statement

To provide resource-based recreation while preserving, interpreting and restoring natural and cultural resources.

Friends of MacArthur Beach State Park, Inc. Mission Statement

The Friends of MacArthur Beach State Park has a mission of generating supplemental resources to preserve, restore, and interpret the natural and cultural assets of the Park for present and future generations.

Florida Park Service Definition of a Volunteer

A volunteer is a person who performs work for the Florida Park Service under a current, signed Volunteer Application and Volunteer Agreement, and provides this service free of charge.

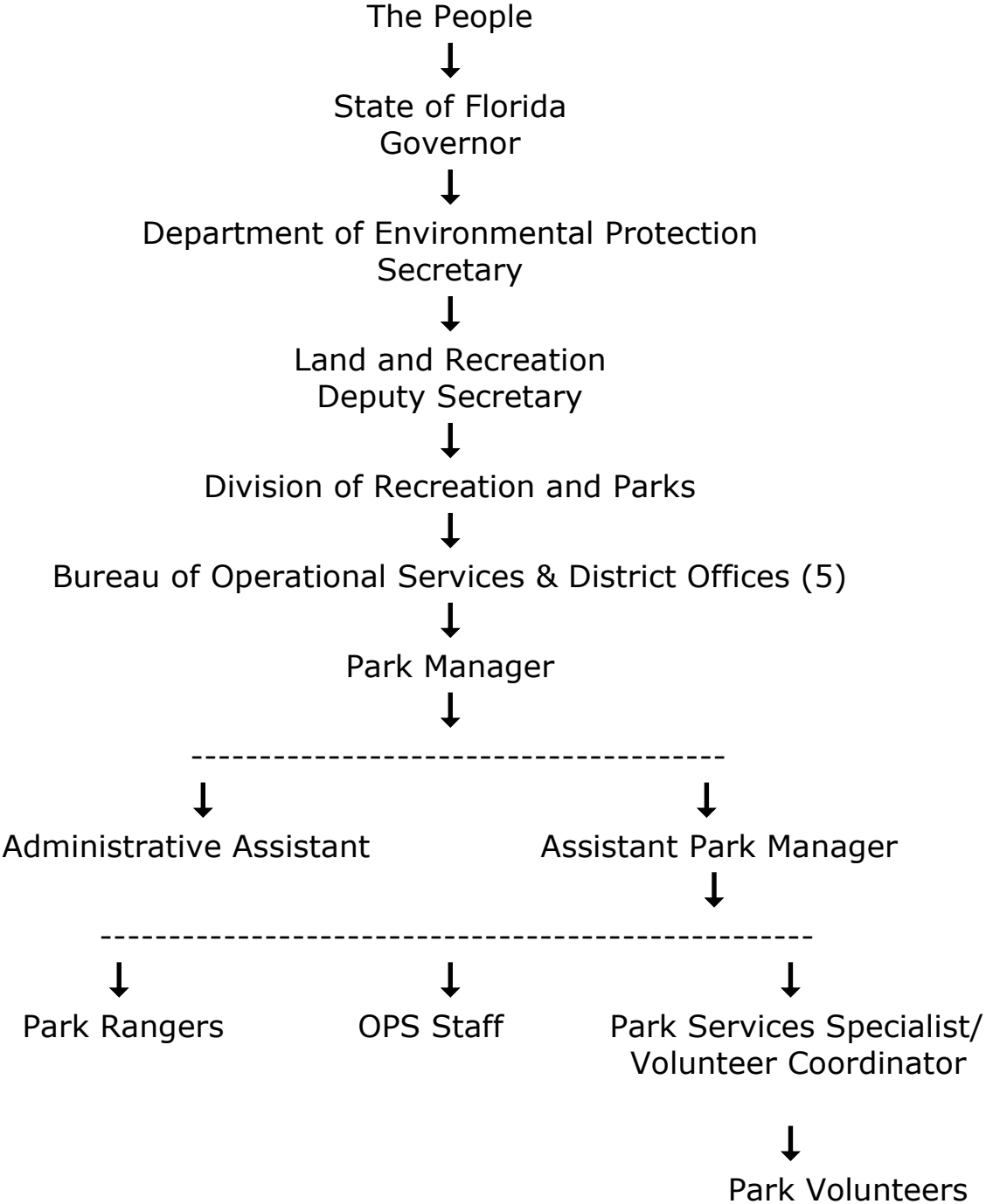
Florida Park Service Volunteer Service Objective

To expand our ability to provide quality service, professionalism, support, and stewardship without increasing the cost to visitors and taxpayers.

Volunteers help preserve the Real Florida

- 160 state parks protecting 700,000 acres
- 100 miles of coastline
- 8 National Historic Landmarks
- 39 sites on the National Registrar of Historic Places

1.2 Organizational Structure



Section 2: Park description and history

2.1 Description of John D. MacArthur Beach State Park

John D. MacArthur Beach State Park is a pristine natural area with a unique mixture of sub-tropical maritime hardwood hammock, mangrove estuary, dune, shoreline and limestone rock reef. Located on a barrier island in northern Palm Beach County, it represents a small part of our natural ecosystems protected from encroaching development.

The Park, situated between the Atlantic Ocean and the Intracoastal Waterway in Lake Worth, with a total of 437 acres; 174 acres of upland, 263 acres of submerged land and a number of islands including Munyon Island on the west side of Route A1A near the Intracoastal Waterway.

The Park has several highly productive biological communities. The **estuary**, part of the Lake Worth estuarine system, contains the largest stand of mangroves and the largest sea grass beds in all of Lake Worth Lagoon. The Park's **sub-tropical maritime hardwood hammock** is the largest on the Southeast coast of Florida. The **dune and shoreline** creates a natural barrier to protect the other ecosystems while the **offshore limestone reef** abounds with marine life. The Park also houses several species of **threatened and endangered plants and animals**.

In addition to protecting its natural resources, the Park offers a variety of recreational activities for the public. Its nature trails, 1.6 miles of beach, shallow near shore reefs and boardwalk spanning the estuary provide visitors with the opportunity to swim, fish, snorkel, study nature, go birding, and shelling. They can also participate in many interpretive and educational programs and special events.

The Park is open year round from 8 AM until sunset. The Nature Center and Educational Center are open daily from 9 AM to 5 PM.

2.2 History of the Park

The earliest evidence of human occupation of this area comes from artifacts recovered from "kitchen middens" located in the Park. The Native Americans who settled this area gathered food from the ocean and lake. Fragments of bones, shell, and pottery were discarded in refuse piles or "middens".

In the early 1900s, Munyon Island was famous for its lavish resort hotel, "The Hygeia". Built by Dr. James Munyon, the hotel was destroyed by fire in 1915. Today, Munyon Island is accessible to park visitors by kayak or boat for day use only. A 20-slip public boat dock is available year round.

The Park was established in 1981 when the State purchased the land and the John D. and Catherine T. MacArthur Foundation donated 80 acres. Additional Foundation contributions and State funds were used to develop the existing facilities and the Park was opened to the public in November of 1989. Because of his contributions in allowing the State of Florida to secure the land and vision of saving a space for the public to enjoy, the Park was named after John D. MacArthur.

In the early years, a small staff of three devoted most of its time to resource management projects, which included exotic plant removal, litter clean up, and closing off the many footpaths which had worn through the dunes. When the Park's facilities were completed in 1989, the Park staff was increased from three to fifteen. In order to provide quality programs and services to the public, a Volunteer Program and Citizens Support Organization (Friends of MacArthur Beach State Park) were established to enhance the Park's staff and its programs.

Today, approximately 150,000 people from all over the world visit the park each year. In an average year, volunteers lead over 5,000 students on educational group tours and conduct guided nature walks for over 2,000 visitors. Thousands come each year to participate in the Park's unique special events, which could not happen without the participation of hundreds of volunteers.

2.3 Florida Park Service and MacArthur Beach State Park Time-line

- 1872** First National Park created, "Yellowstone"
- 1915** Legislature gave one and one-half sections of land in Dade County to the Florida Federation of Women's Clubs to be maintained as a public park. It was called Royal Palm State Park and is now a part of Everglades N.P.
- 1935** Legislature authorized the Board of Forestry to set up a Department of State Parks
- 1953** Annual visitation tops 1 million
- 1969** Governmental consolidation and reorganization created the Division under the Department of Natural Resources
- 1972** Annual visitation tops 10 million
- 1977** Official volunteer program is established in the Florida Park Service
- 1981** The John D. and Catherine T. MacArthur Foundation made the land available for the State of Florida to purchase John D. MacArthur Beach State Park
- 1989** John D. MacArthur Beach State Park is opened to the public
- 1990** Creation of the Friends of MacArthur Beach State Park and the Park's volunteer program is established
- 1993** The Departments of Environmental Regulation and Natural Resources were merged into the Department of Environmental Protection
- 1994** Annual park revenue tops 21 million
- 1999** Florida Park Service is honored with the National Gold Medal Award for excellence in park management by the National Recreation and Parks Association
- 2005** Florida Park Service is honored for the second time with the National Gold Medal Award for excellence in park management and becomes the nation's first two-time Gold Medal winner
- 2005** Volunteers contributed more than 1 million hours of time to the Florida Park Service for the first time
- 2006** Friends of MacArthur Beach launch a capital campaign/PIP project to raise \$2.1 million dollars for construction of education center and complete renovation of Nature Center
- 2010** Annual visitation tops 20 million and FPS volunteers contributed nearly 1.3 million hours of time to the Florida Park Service
- 2010** MacArthur Beach State Park Volunteer Program celebrated 20th anniversary and Friends of MacArthur Beach State Park wins CSO of the Year from the Friends of Florida State Parks
- 2011** Construction is completed on the brand new facilities: Pew Family Natural Science Education Building, Beach Outfitters Gift Shop, Staff Discovery Lab and Research Library are open for business
- 2012** Renovation is completed for new Nature & Welcome Center, ribbon cutting ceremony celebrates this gift to the public
- 2014** Education Team wins Florida Park Service Volunteer Team of the Year award

Section 3: MacArthur Beach Volunteer Program Overview

3.1 Volunteer Program Philosophy

Public service is the central theme of every Florida Park Service endeavor. High standards of management and service are the Florida Park Service trademark. Quality resource-based outdoor recreational experiences assure that Florida's state parks will continue to serve as major tourist destinations, thereby contributing significantly to the State's economy.

In dealing with the various tasks and duties assigned to the Florida Park Service, we categorize everything we do into what is called the **Big Five**:

- Administration
- Maintenance
- Protection
- Resource Management
- Visitor Services

3.2 Volunteer types

3.2.1 Group volunteers

Groups, such as scout groups, local organizations, universities and colleges, or companies interested in donating their time for a special project should contact the Volunteer Coordinator. The head of the group should meet with the Volunteer Coordinator for coordination of the project, number of participants, and scheduling. The head of the group and Volunteer Coordinator should fill out a Group Volunteer Form and all participants of the service project will need to complete the Group Volunteer List Application.

3.2.2 Individual regular service volunteer

A regular service volunteer is an individual with a current signed Florida Park Service Volunteer Application & Agreement, maintains a minimum of 20 hours of volunteer service each year, and attends at least one interpretative/informational park program per year. Persons that cannot commit to the regular service requirements are encouraged to participate in park scheduled group volunteer opportunities.

Regular service volunteers, should be dependable, reliable, have good communication skills, and maintain the mission of the FPS and the volunteer organization. Volunteers must be in reasonable health and physically capable of performing their assigned position. Those with disabilities are encouraged to apply as volunteers; Park facilities are accessible to everyone.

Anyone interested in becoming an individual regular service volunteer must complete the steps outlined in 3.3 below. Additional, requirements may apply for specific volunteer positions.

3.2.3 Court ordered community service

John D. MacArthur Beach State Park does not allow volunteer applicants seeking to satisfy court ordered volunteer/ community service hours.

3.3 Steps to Becoming a Volunteer

1. Complete a Florida Park Service Application
 - submit to Volunteer Coordinator by hand, mail, or fax
2. Orientation
 - Volunteer Coordinator will invite interested individuals to attend a scheduled orientation
3. Background & References Checked
 - 2 out of 3 references need to be completed, sexual predator (FDLE) background needs to be printed and attached to file
4. Interview (optional)
 - allows volunteer coordinator and interested individuals to discuss interest and park needs, also allow scheduling of training – opportunity to attend a Nature Walk and complete FPS sexual harassment and diversity training
5. Schedule for training
 - Depending upon position, this may involve one-on-one training with staff of volunteers, specific skill training, or other training as required.
 - Volunteer agrees to wear assigned uniform, provided by the DEP or Friends of MacArthur Beach State Park

3.4 Volunteer Training and Evaluation

After the initial interview and placement, the volunteer will receive one-on-one training specific to the assigned position. Some jobs may involve some independent study in order to gain proficiency in certain subjects. Training gives volunteers the opportunity to learn new skills in addition to fine-tuning existing talents.

Once a volunteer is comfortable with their assigned position, and has demonstrated the ability to perform all of the required duties, Park Staff will schedule the volunteer.

Volunteers are encouraged to expand their knowledge throughout their time at the Park. Asking questions, borrowing reference materials, and interacting with other knowledgeable volunteers and staff members are a few ways this can be accomplished.

Volunteers will be evaluated in a fair and timely manner to ensure quality and suitability of the job assignment. **The park reserves the right to terminate any individual who does not uphold volunteer and park policies.**

An important facet of the Volunteer Program is receiving evaluations and suggestions from the volunteers about the Park's programs and activities. Any suggestions or ideas may be given to the Volunteer Coordinator or other park personnel orally or in writing. The Volunteer Program is constantly striving to update and improve its existing programs, as well as expand into new areas. Often the impetus of needed changes is the result of volunteer suggestions that may not have been recognized or foreseen by park staff. Evaluations are both welcomed and needed and we encourage you to voice your opinions.

3.5 Uniform Standards

The Florida Park Service is a uniform agency. Volunteers are part of the Florida Park Service team, representing the agency image and philosophy. Therefore, volunteers are expected to wear the Florida Park Service volunteer uniform according to the established uniform guidelines.

It is the intent of the Division for the volunteers in each state park unit to present a uniform appearance that identifies them as a Florida Park Service volunteer.

The following volunteer uniform standards shall apply:

- All regular service volunteers shall conform to the appearance and other applicable procedures found in the Florida Park Service Operations Manual when working at the ranger station or while engaged in other public contact work. Regular service volunteers shall wear the light grey uniform contract shirt with volunteer patches for duty in accordance with requirements for Class A uniform. Trousers, skirts, or shorts will be of a solid color complimentary to the uniform shirt and in good repair.
- A light grey T-shirt shall be provided to all regular service volunteers as an alternative to the grey uniform shirt while performing primarily field duties such as: maintenance of facilities and equipment, park cleanup and other manual duties in accordance with the requirements for Class B uniform wear. This shirt is not intended to replace the regular uniform shirt.
- A park unit may establish a different uniform standard than outlined in this section. Any departure shall take the form of a written park policy, which

will be enforced by the park. That policy shall be reviewed and approved by the District Bureau Chief prior to its implementation. The policy shall take into consideration a clear distinction between the standards for public contact work and field duties. This procedure will not be used to establish a policy that will establish the light grey T-shirt or any other, plain round collar T-shirt as an appropriate uniform for public contact work such as entrance stations, museums, interpretive tours, or similar activities. A grey vest may be provided to volunteers for use in public contact work on a temporary basis only until the volunteer has been provided or acquires the required park uniform.

- A volunteer cap may be issued to regular service volunteers. The regulation hat for sun protection may be purchased and worn by volunteers.
- A nametag will be provided on the first day of training. Whenever an individual is coming to volunteer at the park, they must have a nametag on, positioned on the right aligned with the pocket. This is to identify volunteers to the staff, as well as to visitors.
- Uniforms should appear neat and wrinkle free; care and cleaning are the volunteer's responsibility.
- Uniforms should only be worn during the hours a volunteer is on duty. Volunteers should change into civilian clothes if recreating in the park after fulfilling their volunteer duty. Volunteers should use discretion when wearing the uniform outside of the park. **Consumption of alcoholic beverages while in uniform is prohibited.**

3.6 Scheduling and Attendance

All volunteer activities will be scheduled by the volunteer coordinator or other park staff. Volunteers are expected to be present on the day(s) and time(s) they agreed to be scheduled. Attendance and punctuality by volunteers for scheduled assignments is integral to the success of park operations.

In the event that a volunteer cannot be present for the scheduled assignments, they must contact the Volunteer Coordinator or appropriate staff member no later than 24 hours in advance.

Please discuss scheduling problems with the volunteer coordinator; Volunteers who consistently call in and are absent from scheduled assignments may be re-evaluated for volunteer positions.

3.7 Volunteer Responsibilities

Volunteers are expected to become familiar with the Park's facilities, programs, and the rules and procedures of the Park and Park Service. It is the duty of the volunteer to adhere to these rules as well as to inform visitors about existing regulations and report violations to park staff. **The Park may terminate any individual who does not uphold volunteer and park policies.**

3.8 Risk Protection

Volunteers are covered by worker's compensation in the event of an injury occurring while volunteering in the park. If any accident or injury occurs while volunteering, report it to the Nature Center staff or other park personnel immediately. Volunteers, involved in park projects are protected from personal liability claims from actions involving their service.

3.9 Volunteer Benefits

To maintain the volunteer benefits listed below, each volunteer must maintain a minimum of 20 service hours per year and attend at least one interpretative/informational park program per year. Interpretative/ informational programs include, but are not limited to; Guided Nature Walk, Bird Walk, Butterfly Walk, Public Turtle Nesting Walk, Guided Reef Tour, FUN Program, continuing education lecture series, Park special presentations, Volunteer training lectures/programs.

- Benefits for all volunteers include:
 - Free individual volunteer admittance to the park
 - Invitation to special volunteer events (e.g. turtle walks, lectures, potluck dinners, etc)
 - Invitation to the annual Volunteer Appreciation Event & Holiday Party
 - Electronic copy of the Park quarterly newsletter, *The Dune News*

- Intangible benefits include:
 - Meeting new people
 - Opportunities for continuing education
 - Learning new skills
 - Forming new friendships
 - Enjoyment of the Park's facilities and its natural resources

- Additional benefits based on reaching milestone service hours:
 - At 100 hours of service:
 - Engraved name pin is awarded
 - MacArthur Beach State Park Volunteer Family Pass (For every 100 hours served the volunteer and their family have free entry

- into the park upon presentation of the volunteer ID card with Park Manager's signature)
- At 150 hours of service – the Friends of MacArthur Beach will purchase a FPS dark grey button down volunteer uniform
 - For every 500 hours of service – will receive FPS Volunteer Annual Pass which allows free entry for the volunteer into any state park for one year
 - Service award pins are awarded at 100, 250, 500, 1000, and 2000 hours of service respectively

Section 4: Volunteer Opportunities

4.1 Volunteer Position Descriptions

Please speak with the volunteer coordinator about detailed volunteer position descriptions and training requirements included in the Volunteer Coordinator manual.

Administration/Book keeping/Data Entry

- ❖ Computer proficiency
- ❖ Good visitor service and phone skills
- ❖ Organizational talent

Animal Care Assistant

- ❖ Knowledge of coastal organisms
- ❖ Skilled in working with others
- ❖ Ability to work with shellfish, raw fish
- ❖ Ability to learn aquarium equipment

Beach Clean-up (scheduled)

- ❖ Ability to walk on uneven surfaces
- ❖ Ability to bend and carry 30 lbs
- ❖ Knowledge of shoreline organisms
- ❖ Knowledge of safety procedures, tools

Beach Clean-up Coordinator

- ❖ Ability to walk on uneven surfaces
- ❖ Ability to coordinate with staff and volunteers
- ❖ Knowledge of shoreline organisms
- ❖ Knowledge of safety procedures, tools
- ❖ Knowledge of cleanup procedures
- ❖ Organizational skills

Director of Education Assistant

- ❖ Good organizational skills
- ❖ Ability to take and follow directions
- ❖ Computer Proficiency
- ❖ Ability to help with different projects

Education – Natural Science Education Team

- ❖ Knowledge of/willingness to learn about Florida's natural communities
- ❖ Ability to interpret that knowledge
- ❖ Ability to walk one mile outdoors
- ❖ Knowledge in childhood development
- ❖ Skilled in visitor services
- ❖ Ability use curriculum guides

Estuary Clean-up in Kayak (individual)

- ❖ Ability to walk on wet/muddy uneven surfaces
- ❖ Ability to bend and carry 40 lbs
- ❖ Knowledge of shoreline organisms
- ❖ Knowledge of boat safety and tools
- ❖ Skilled in maneuvering a kayak

Gift Store/Kayak Rental

- ❖ Familiar with point of sale tools
- ❖ Skilled in visitor services
- ❖ Interest in Park resources
- ❖ Ability to work 4 hour shifts

Kayak Tour Assistant

- ❖ Ability to load and unload kayaks
- ❖ Ability to help visitors in and out of kayaks
- ❖ Ability to launch kayaks
- ❖ Skilled in visitor services
- ❖ Skilled in maneuvering a kayak
- ❖ Ability to participate in 2 hour tours

Kayak Tour Guide

- ❖ Extensive knowledge of Florida's environment, park and Munyon's Island
- ❖ Ability to drive kayak trailer
- ❖ Ability to use a two-way radio
- ❖ Ability to load and unload kayaks
- ❖ Ability to help visitors in and out of kayaks
- ❖ Ability to launch kayaks
- ❖ Skilled in visitor services
- ❖ Skilled in maneuvering a kayak
- ❖ Ability to lead 2 hour kayak tours

Moonlight Concert Assistant

- ❖ Ability to assist staff with concert procedures
- ❖ Skilled in visitor services
- ❖ Interest in Park resources
- ❖ Ability to work at night

Moonlight Concert Helper

- ❖ Skilled in visitor services
- ❖ Interest in Park resources
- ❖ Ability to work at night
- ❖ Ability to help staff with concert setup and break down
- ❖ Ability to lift and carry up to 15 pounds and to walk in areas of low light with a flashlight

Museum/Nature Center Docent

- ❖ Extensive knowledge of Florida's natural communities and/or an interest in research
- ❖ Ability to interpret knowledge
- ❖ Knowledge of Nature Center exhibits
- ❖ Knowledge of aquarium species
- ❖ Skilled in visitor services

Nature Trail Maintenance (individual)

- ❖ Ability to walk on uneven surfaces
- ❖ Ability to work in Florida's climate
- ❖ Ability to bend and carry 30 lbs
- ❖ Knowledge of Florida plants and insects
- ❖ Knowledge of safety procedures, tools

Nature Walk Guide

- ❖ Extensive knowledge of Florida's environment and/or research interest
- ❖ Ability to interpret that knowledge
- ❖ Skilled in working with people of all ages
- ❖ Ability to walk one mile outdoors
- ❖ Skilled in visitor services

Nursery Assistant

- ❖ Gardening skills
- ❖ Knowledge of Florida plant communities
- ❖ Knowledge of safety procedures, tools
- ❖ Ability to work in Florida's climate
- ❖ Research interest

Park Clean-up (individual)

- ❖ Ability to walk on uneven surfaces
- ❖ Ability to bend and carry 30 lbs
- ❖ Skilled in visitor services
- ❖ Knowledge of safety procedures, tools
- ❖ Ability to work in Florida's climate

Park Maintenance (handling equipment)

- ❖ Knowledge of carpentry, plumbing, electricity or small engines
- ❖ Ability to bend and carry 40 lbs
- ❖ Knowledge of safety procedures, tools
- ❖ Ability to work in Florida's climate
- ❖ Ability to take instructions

Project Specific

- ❖ Extensive knowledge of Florida's natural communities
- ❖ Interest in research
- ❖ Ability to take/understand instructions
- ❖ Computer Proficiency

Ranger Assistant

- ❖ Knowledge of carpentry, plumbing, electricity or small engines
- ❖ Ability to bend and carry 40 lbs
- ❖ Skilled in visitor services
- ❖ Knowledge of safety procedures, tools
- ❖ Ability to work in Florida's climate
- ❖ Great communication skills

Reef Tour Docent

- ❖ Extensive knowledge of Florida's reef communities and/or an interest in research
- ❖ Ability to interpret knowledge
- ❖ Ability to pass DEP snorkel evaluation
- ❖ Skilled in visitor services
- ❖ Skilled in ocean snorkeling
- ❖ Strong swimming skills
- ❖ Proficient in leading presentations
- ❖ Knowledge of safety procedures

Toll Collector

- ❖ Familiar with point of sale tools
- ❖ Ability to use two-way radio, telephone
- ❖ Skilled in visitor services
- ❖ Knowledge of Park resources
- ❖ Ability to work four hour shifts

Tram Driver

- ❖ Skilled in working with people of all ages
- ❖ Ability to safely drive extended length golf cart
- ❖ Skilled in visitor services
- ❖ Knowledge of Park resources
- ❖ Ability to work three hour shifts
- ❖ Ability to use two-way radio

Tram Driver Coordinator

- ❖ Skills noted for tram driver above
- ❖ Ability and interest in contacting others by phone/email
- ❖ Ability to develop and maintain schedules
- ❖ Knowledge of Park resources
- ❖ Ability to work three hour shifts
- ❖ Ability to use two-way radio
- ❖ Organizational skills
- ❖ Computer proficiency

Turtle Survey

- ❖ Skilled in operating a John Deere Gator
- ❖ Extensive knowledge of Florida's Sea Turtle nesting behavior
- ❖ Ability to distinguish nesting turtle tracks
- ❖ Ability to use GPS equipment
- ❖ Ability to accurately record nesting reports
- ❖ Ability to communicate with park staff/management
- ❖ Skilled in using a two-way radio
- ❖ Ability to work early mornings

Turtle Tank Docent

- ❖ Extensive knowledge of Florida's sea turtles
- ❖ Ability to interpret that knowledge
- ❖ Ability to work 3 hours
- ❖ Skilled in visitor services
- ❖ Knowledge of Park resources

Turtle Walk Grouper

- ❖ Knowledge of Florida's sea turtles
- ❖ Ability to work late night hours
- ❖ Skilled in working with people of all ages
- ❖ Ability to walk two miles in the sand
- ❖ Skilled in visitor service

Turtle Walk Scout I – Lead Scout

- ❖ Extensive knowledge of Florida's sea turtles
- ❖ Ability to interpret that knowledge
- ❖ Ability to work late night hours
- ❖ Skilled in working with people of all ages

- ❖ Ability to walk two miles in the sand
- ❖ Skilled in visitor services
- ❖ Ability to train Scout III
- ❖ Ability to lead Scout groups
- ❖ Extensive knowledge of scouting procedures

Turtle Walk Scout II – Scout

- ❖ Extensive knowledge of Florida's sea turtles
- ❖ Ability to interpret that knowledge
- ❖ Ability to work late night hours
- ❖ Skilled in working with people of all ages
- ❖ Ability to walk two miles in the sand
- ❖ Skilled in visitor services
- ❖ Ability to work with other Scout volunteers
- ❖ Knowledge of scouting procedures

Volunteer Coordinator Assistant

- ❖ Skilled in working with people of all ages
- ❖ Computer proficiency
- ❖ Good visitor services and phone skills
- ❖ Organizational talent

Section 5: Friends of MacArthur Beach State Park

5.1 Overview

Friends of MacArthur Beach State Park is a non-profit corporation with a mission of generating supplemental resources to preserve, restore, and interpret the natural and cultural assets of the Park for present and future generations.

John D. MacArthur Beach State Park is a model public-private partnership. Owned by the State of Florida, the staff and daily needs of the Park are funded by the State. The Friends raise funds through memberships, by operating the Outfitters Gift Store, holding special events, renting kayaks, soliciting donations, and seeking volunteer. All funds raised by the Friends stay here in the Park, making your visit more memorable and fun.

The Friends 2006 - 2009 Capital Campaign raised over \$2,100,000.00 to build a new Natural Science Education and Welcome Center, New Interpretive Displays and Nature Center Improvements and other Park improvements.

The Natural Science Education Fund helps MacArthur beach State Park continue to provide science education programs cost-free to all students of Palm Beach County, kindergarten to adult.

All funds raised by the Friends support the Park, making a visit more educational, memorable, and fun:

- Purchase equipment and supplies for the Natural Science Education Program
- Provide funding to purchase passenger trams, maintenance carts, & pickup truck
- Fund volunteer training and recognition
- Purchase entire fleet of kayaks, paddles, and PFDs
- Fund Park printing, supplies and technology needs
- Provide funds for Park Staff Training
- Produce the Park's quarterly newsletter, *The Dune News*

Membership dollars...

- Help preserve, protect, and maintain the significant natural resources of the Park
- Provide environmental education programs for children and adults
- Help expand and maintain the Park facilities and interpretive programs

5.2 Basic Benefits for all Membership include...

- Free entry to MacArthur Beach State Park
- Free entry with one guest to *MacArthur Under the Moonlight* concerts
- Kayaking Privileges
- "The Dune News", a quarterly newsletter filled with Park news, announcements of activities, field trips, courses, and special events
- Invitation to special "Friends" event
- 10% discount on all gift items sold in the Outfitters Gift Store
- 2 year memberships are also available

5.3 Membership Levels

Corporate - \$1000

- Membership card for free entrance to MacArthur Beach State Park
- Four transferable passes offering basic benefits for employees
- Certificate ready for mounting to display support of MacArthur Beach State Park
- One ½ page ad in one edition of *The Dune News*

Benefactor - \$500

- Membership card for free entrance to MacArthur Beach State Park
- Kayaking privileges

Patron - \$100

- Membership card for free entrance to MacArthur Beach State Park
- Kayaking privileges

Family- \$85

- Membership card for free entrance to MacArthur Beach State Park
- Kayaking privileges

Individual - \$50

- Membership card for free entrance to MacArthur Beach State Park
- Kayaking privileges

Friends of MacArthur Beach State Park is a not-for-profit citizen support organization. A copy of the official registration and financial information of the Friends may be obtained from the Division of Consumer Services by calling 1-800-435-7352.

In compliance with Florida Statutes, Chapter 496, the Friends' Solicitation of Contributions Act registration number is SC-05062; additionally, 100% of your contribution is received by the Friends of MacArthur Beach State Park, Inc.